

ALL ABOARD!

Career & Workforce Development

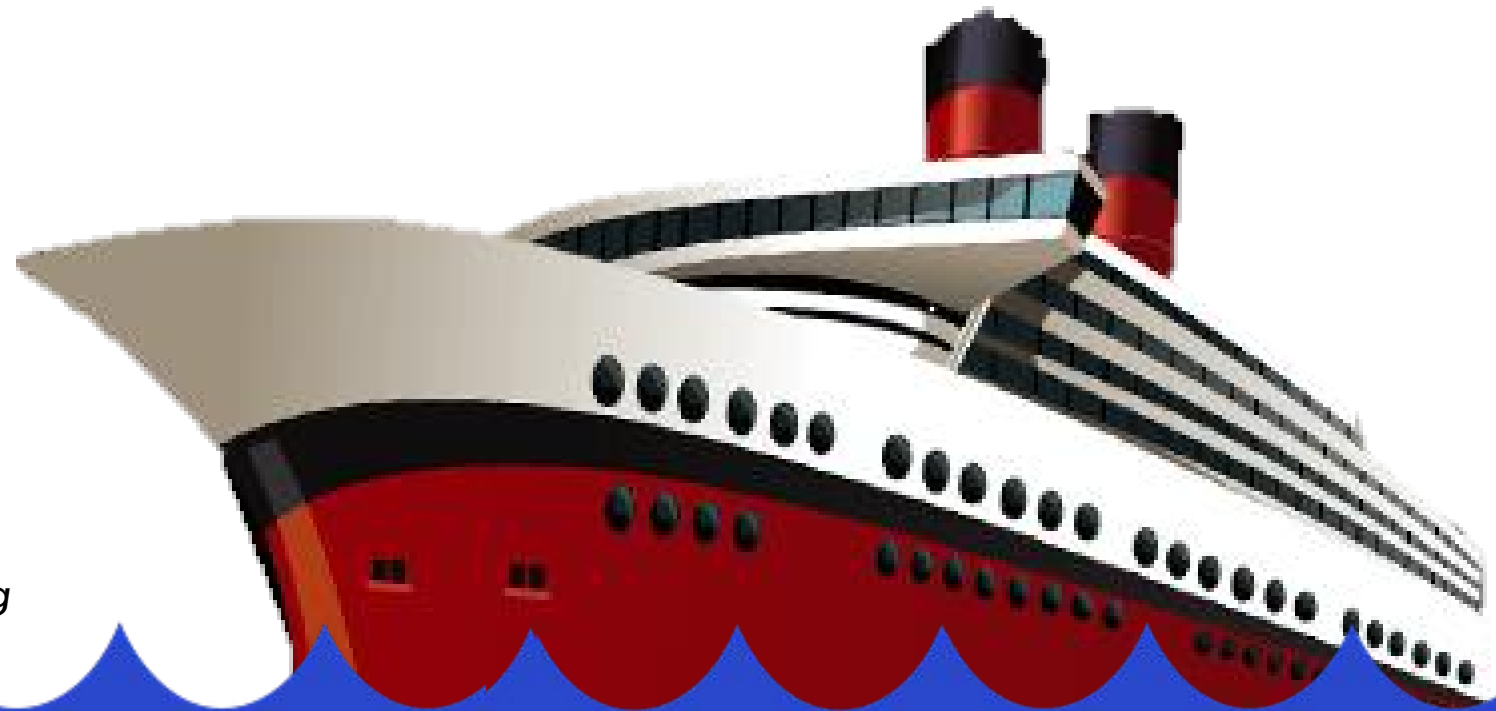
hi



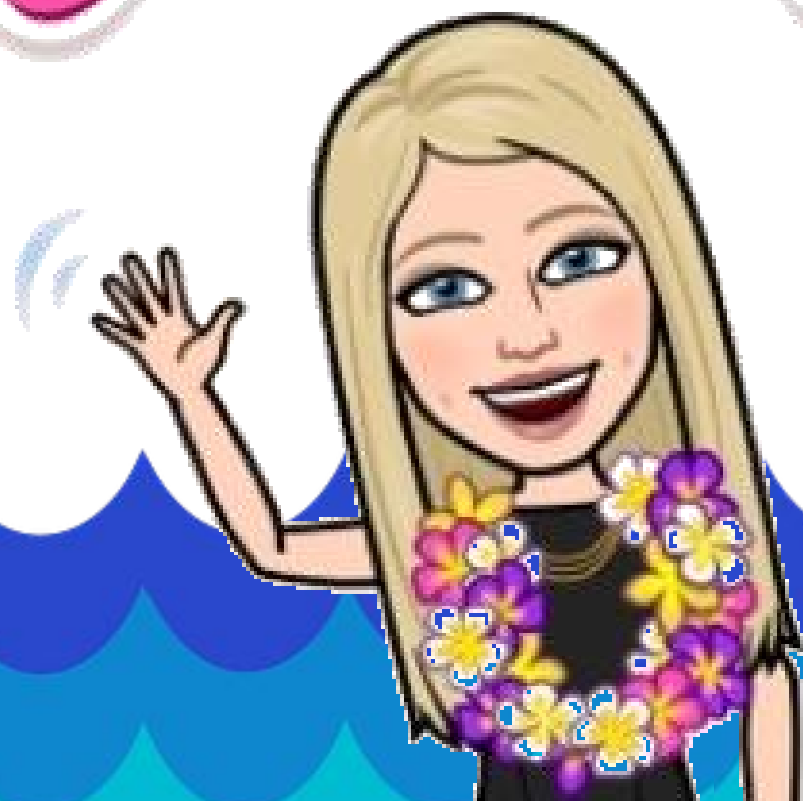
Andrea Diehm
SD DOE
*School Counseling &
Career Development Specialist*



Kendra Ringstmeyer
SD DLR
Director of Workforce Training



Aloha



ALOHIA

from HAWAII



Cheers

MATE!







VACATION!

NO LINES!

NAME

SCHOOL

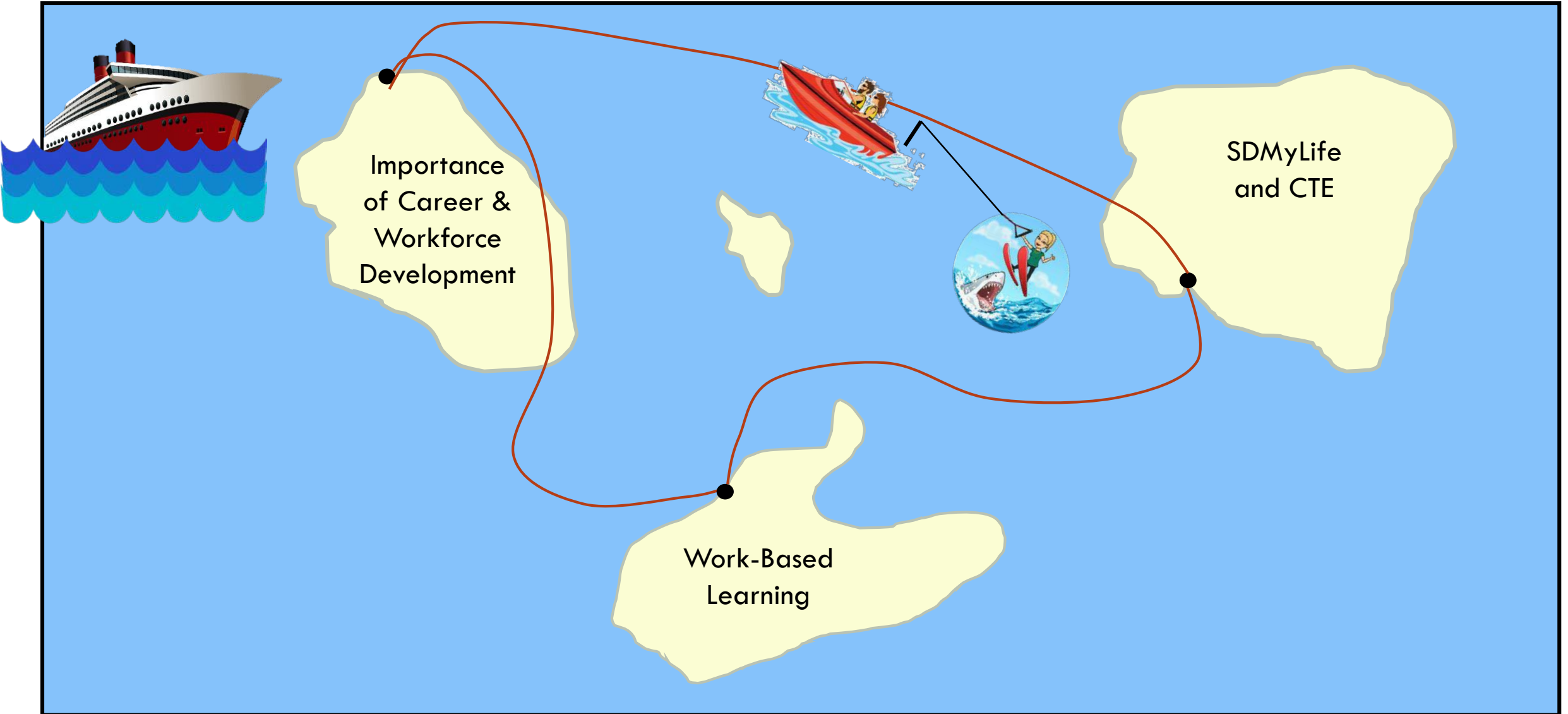
POSITION

FAVORITE/IDEAL VACATION

ENJOY!

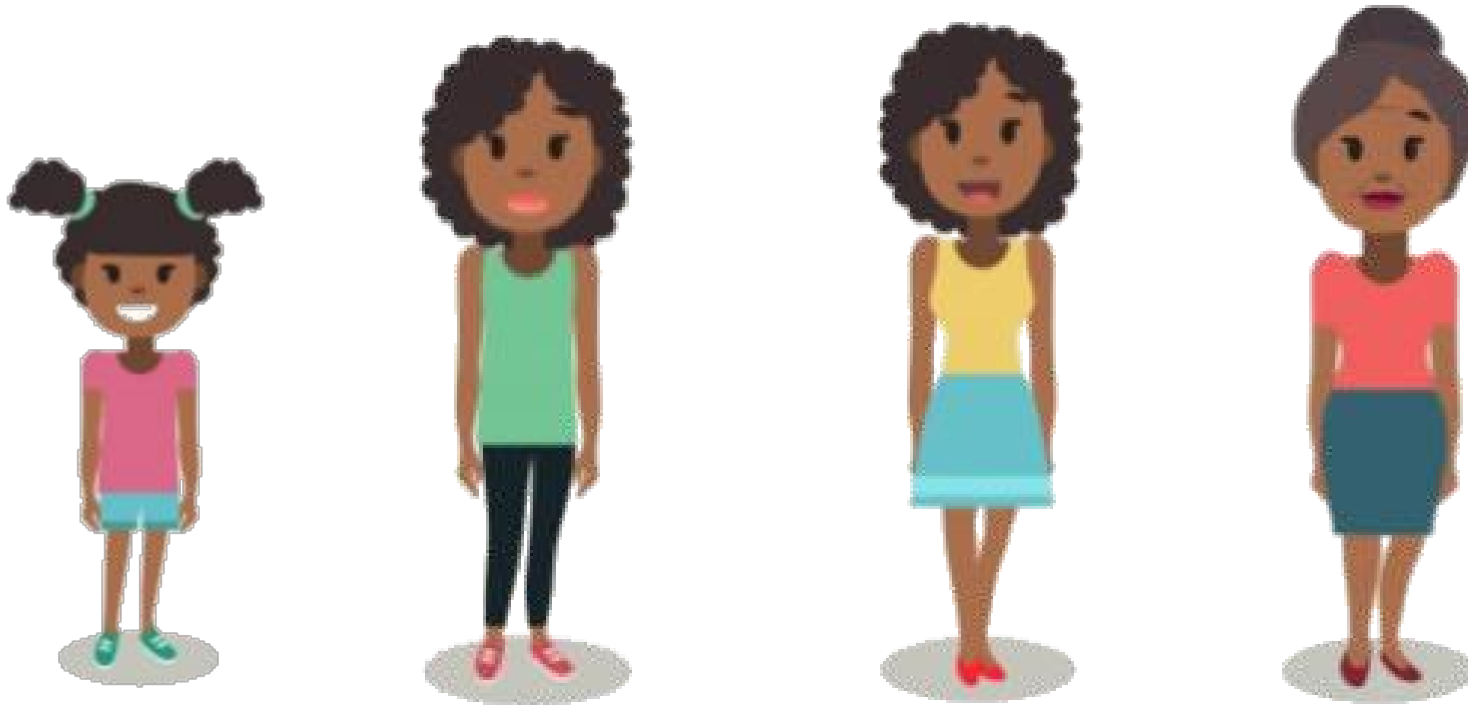


Cruise Ship Itinerary



How important is career & workforce development?

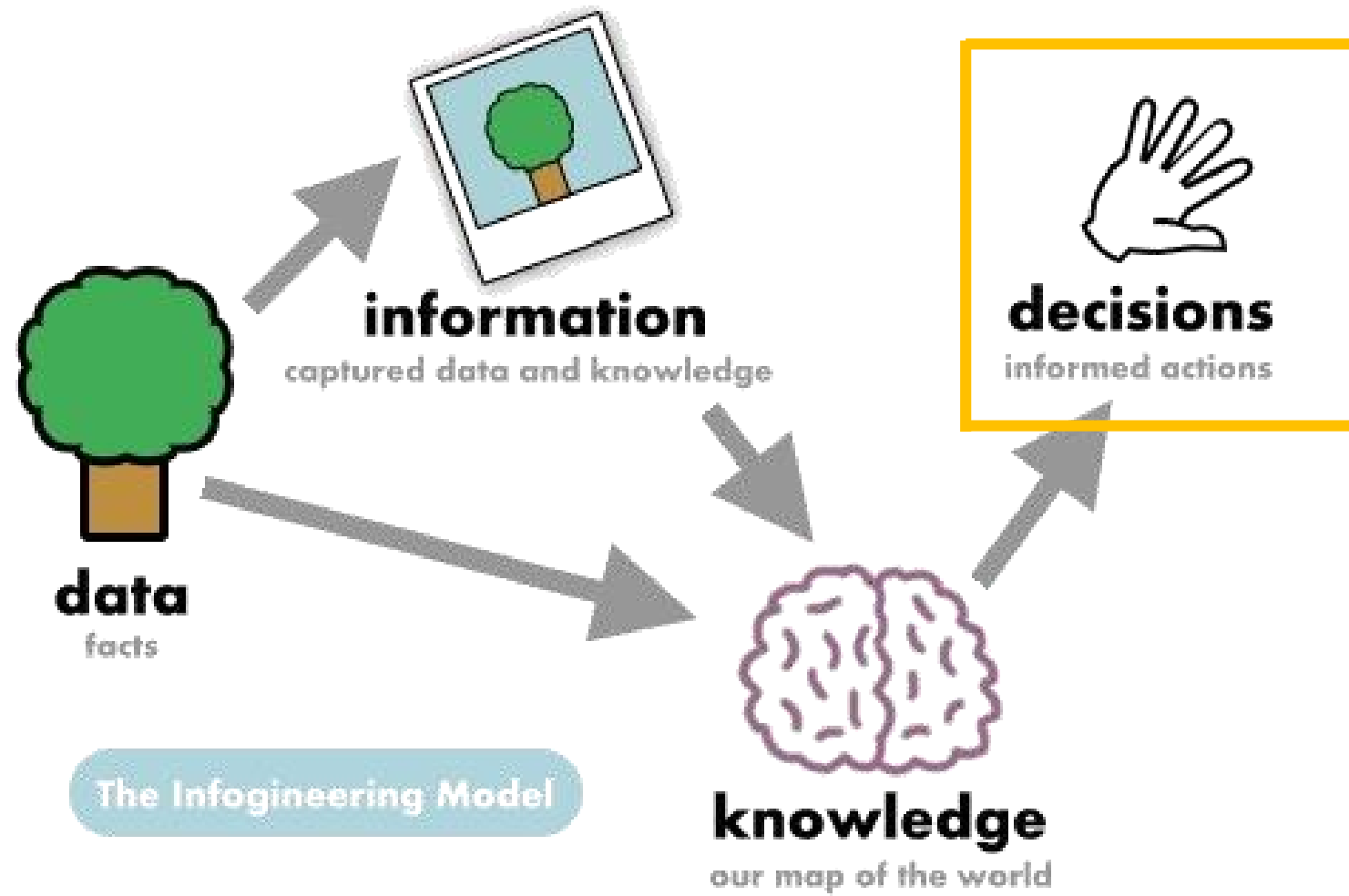




**ENGAGE STUDENTS
WHEN THEY'RE YOUNG**



MULTIPLE PATHWAYS TO SUCCESS



INFORMED DECISIONS

The image shows the iconic 'Family Feud' logo, which consists of the words 'FAMILY' and 'FEUD' stacked vertically in a bold, yellow, serif font with a white outline. The logo is set within a large, blue, oval-shaped sign with a white border and a pattern of small white dots. The sign is mounted on a stand in a brightly lit studio with purple and blue walls and spotlights. The overall scene is vibrant and celebratory.

FAMILY FEUD

Career & Workforce Development Edition



How We Will Play the Game...

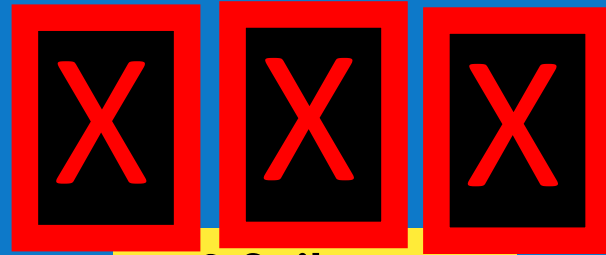


4 Participants
on Each Team

1 member of
each team in
face-off for
question

Team that
buzzes in with
correct answer
gets control of
the board

Option to **PLAY** or
PASS control to the
other team



3 Strikes =
Control is
passed to the
other team

Team with
control of the
board tries to
reveal all of
correct answers
before receiving
3 strikes

That team gets
to give 1
answer in
hopes it's on the
board

If on the board, they get the points

If not, the other team gets the points



FLAMINGOES



PINEAPPLES

Which team will win??

VS.



Let the fun begin!

Question 1

Question 2

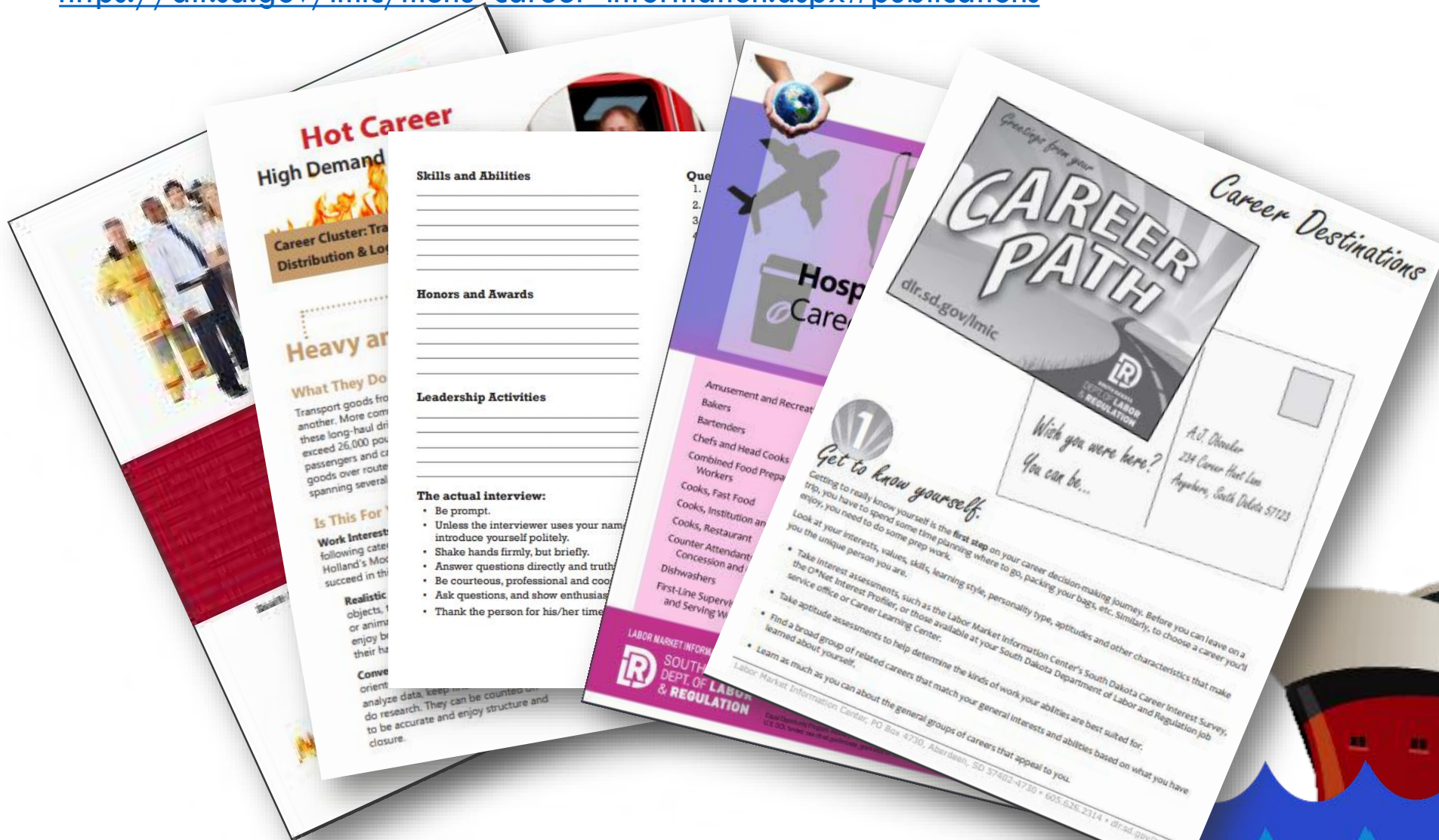
Between 2016-2026 these were named the top high wage, high demand careers.

- | | | | |
|---|--|---------------------------------|---|
| 1 | Heavy and Tractor Trailer Truck Drivers | Accountants and Auditors | 5 |
| 2 | Registered Nurses | | |
| 3 | Sales Representatives | | |
| 4 | Carpenters | | |

TRY AGAIN

LMIC Career Publications

https://dlr.sd.gov/lmic/menu_career_information.aspx#publications



Based on an interview of 1,500+ national employers, these seven workplace skills were considered essential.

Attendance

Accountability

Appearance

Acceptance

Attitude

Appreciation

Ambition



**TRY
AGAIN**

Bring Your “A” Game to Work



Bring Your “A” Game to Work

Value	Behavior	Outcome	Business Result
Reliability	Attendance	Employees show up when scheduled	Decreased employee absenteeism
Professionalism	Appearance	Present consistent brand image	Increased average sale
Positivity	Attitude	Display enthusiasm and passion	Increased employee morale
Initiative	Ambition	Go beyond basic expectations	Improved productivity
Respect	Acceptance	Adhere to policies and rules	Decreased involuntary turnover
Integrity	Accountability	Be trustworthy	Less employee theft and shrinkage
Gratitude	Appreciation	Give authentic service	Improved customer satisfaction

Brought to schools by local DLR offices
AT NO COST!
 First come, first serve basis

Began in the 2018-19 school year:
 60 workshops
 42 high schools
 1,367 students earned a
 DLR certificate of completion

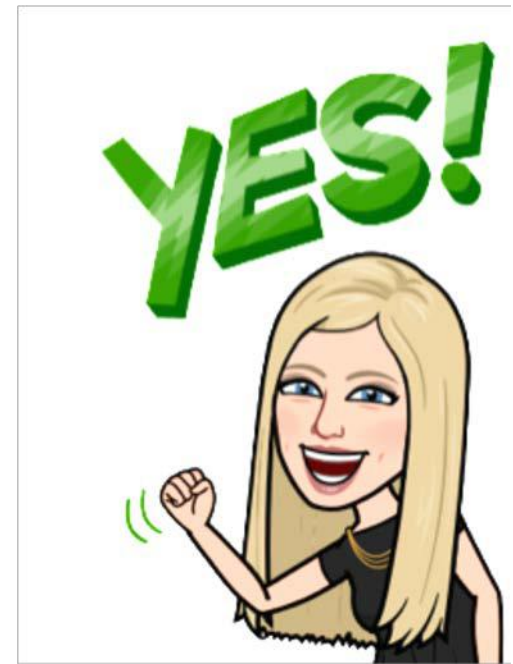


It was nice there
wasn't a lot of writing,
but just enough to
keep us engaged.
~ 12th grader

This workshop has been
very helpful and I highly
recommend it for others.
~ 6th grader

Everything was fun &
it helped me
understand more
about career.
~ 9th grader

I enjoy this program and
strongly think it will help
me as a person in the
future.
~ 9th grader





Importance
of Career &
Workforce
Development

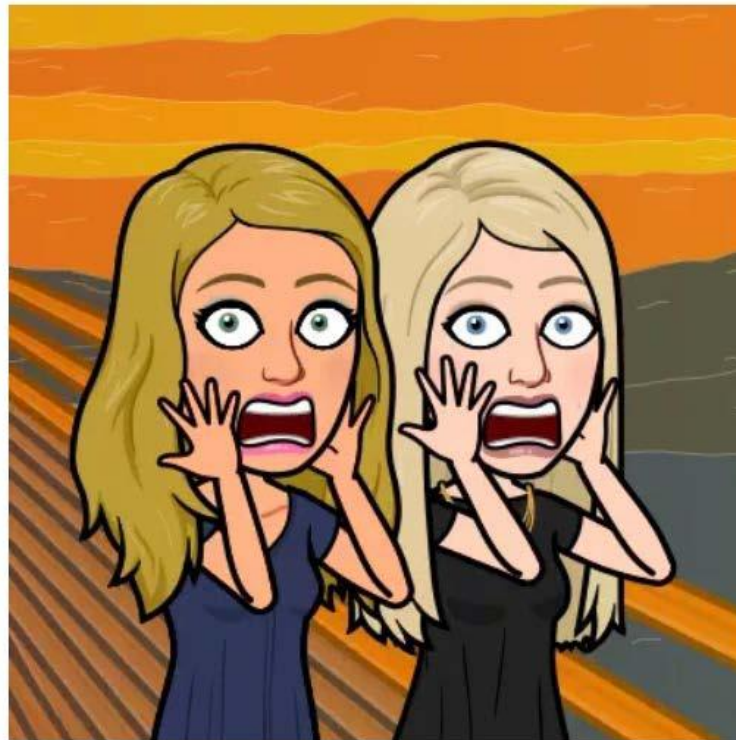
A red location pin with a cartoon woman's face inside, pointing to a yellow 'I'M HERE' sign. The sign is a 3D block letter design with a shadow. Below the sign is a yellow torn-paper shape containing the text 'Work-Based Learning'. A red line connects the top of the pin to the text in the left-hand box.

Work-Based
Learning

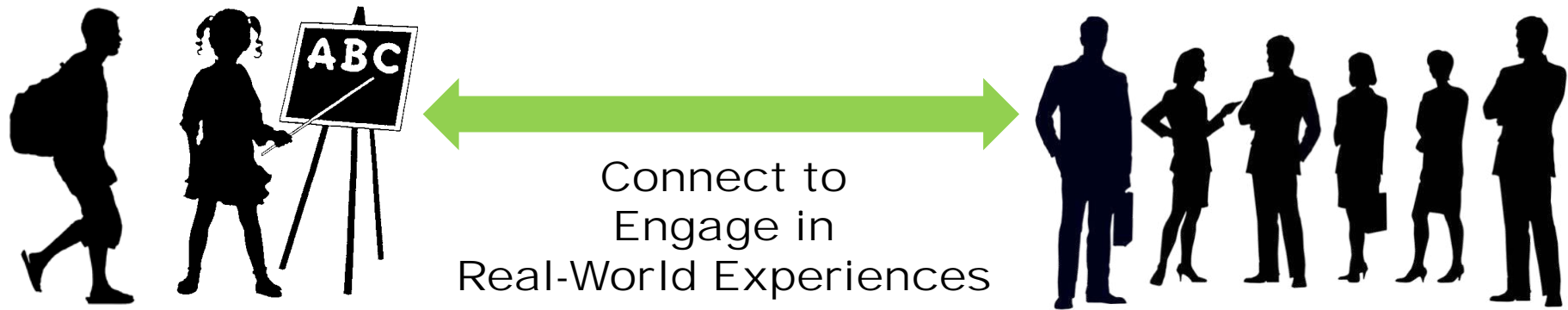
SMyLife
and CTE

Oh no! What is Work-Based Learning?

???



Work-Based Learning



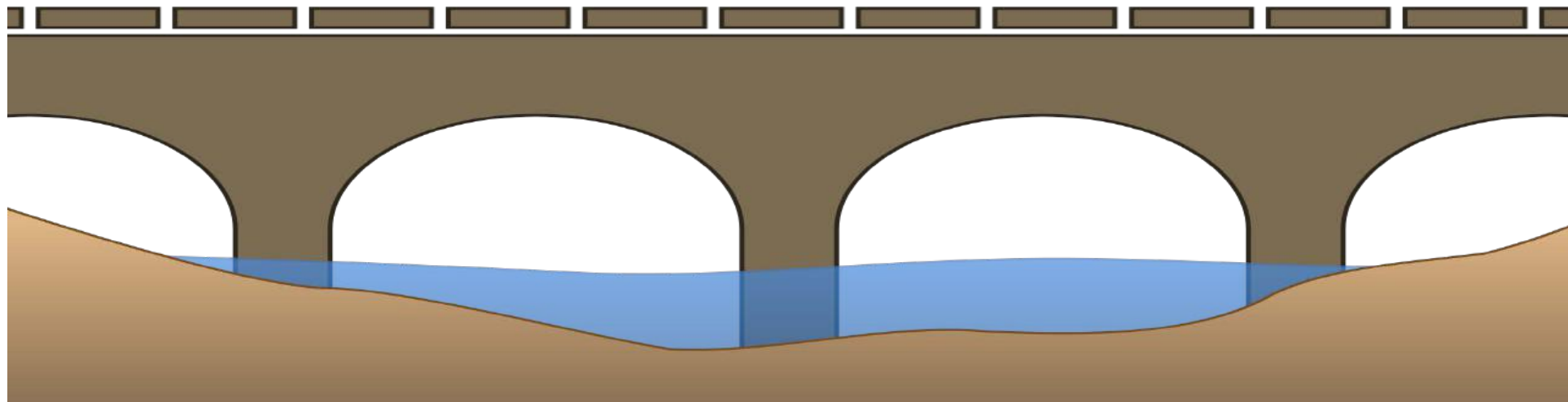
Work-Based Learning



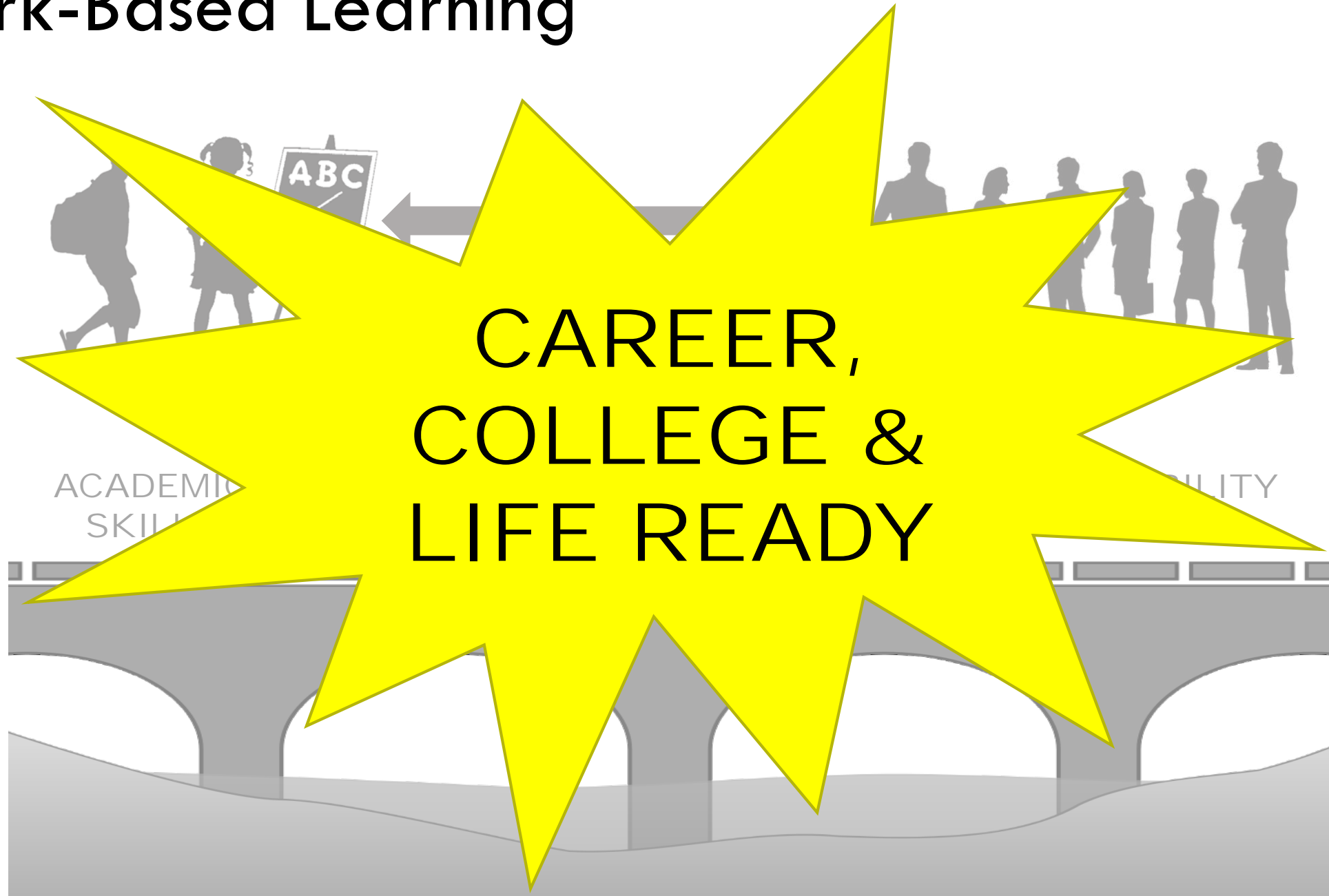
ACADEMIC
SKILLS

TECHNICAL
SKILLS

EMPLOYABILITY
SKILLS



Work-Based Learning



**CAREER,
COLLEGE &
LIFE READY**

ACADEMIC
SKILLS

QUALITY

Work-Based Learning

Elementary School

CAREER
AWARENESS

Work-Based Learning

Middle School

CAREER
EXPLORATION

Elementary School

CAREER
AWARENESS

Work-Based Learning



Work-Based Learning



Elementary School

Career Awareness:

Building understanding of a broad scope of careers and how school relates to the world of work

Industry tours

Guest speakers

Field trips

Middle School

Career Exploration:

Diving in to learn more specifics about targeted careers

Informational interview

Career Café

Job shadow

Career Cluster Camps at postsecondary institutions

High School

Career Preparation:

Applying learning through experience with industry in a career of interest

Project Based Learning

Volunteer experience

Mentor relationship

Internship

Student-run enterprise

Capstone Experience courses:

- Youth Internship
- Youth Apprenticeship
- Service Learning
- Entrepreneurship Experience
- Senior Experience



Work-Based Learning Toolkit

https://dlr.sd.gov/workforce_services/individuals/career_launch/toolkit.aspx

Job Shadow, Youth Internship Resources and more!

The screenshot shows the website interface for the South Dakota Department of Labor & Regulation. At the top, there is a navigation bar with links for CONTACT US, UPCOMING EVENTS, NEWS, PUBLICATIONS, and JOIN OUR TEAM. Below this is a banner area featuring the department's logo and the name of the Cabinet Secretary, Marcia Hultman. To the right of the banner are utility links: FIND A FORM, LOGIN FOR ONLINE SERVICES, and LEARN ABOUT PROGRAMS. A sidebar on the left contains a list of navigation options: Home to Career Exploration, Home to Workforce Services for Individuals, Career Pathways, Hot Careers, Labor Market Information Center Resources, My Next Move, My Skills, My Future, O*Net Online, and Reality Check. The main content area features a red header for the 'Career Launch SD Work-Based Learning Toolkit'. Below the header, a paragraph explains that Career Launch SD was established to increase student awareness of career opportunities. A link is provided for a webinar overview video. At the bottom, there is a logo for Career Launch SD with the tagline 'Opportunity Starts Here'.

CONTACT US UPCOMING EVENTS NEWS PUBLICATIONS JOIN OUR TEAM

Font Size: A A A
Select Language
Powered by Google Translate

SOUTH DAKOTA DEPT. OF LABOR & REGULATION

Marcia Hultman
Cabinet Secretary

FIND A FORM LOGIN FOR ONLINE SERVICES LEARN ABOUT PROGRAMS

Home to Career Exploration
Home to Workforce Services for Individuals
Career Pathways
Hot Careers
Labor Market Information Center Resources
My Next Move
My Skills, My Future
O*Net Online
Reality Check

Career Launch SD Work-Based Learning Toolkit

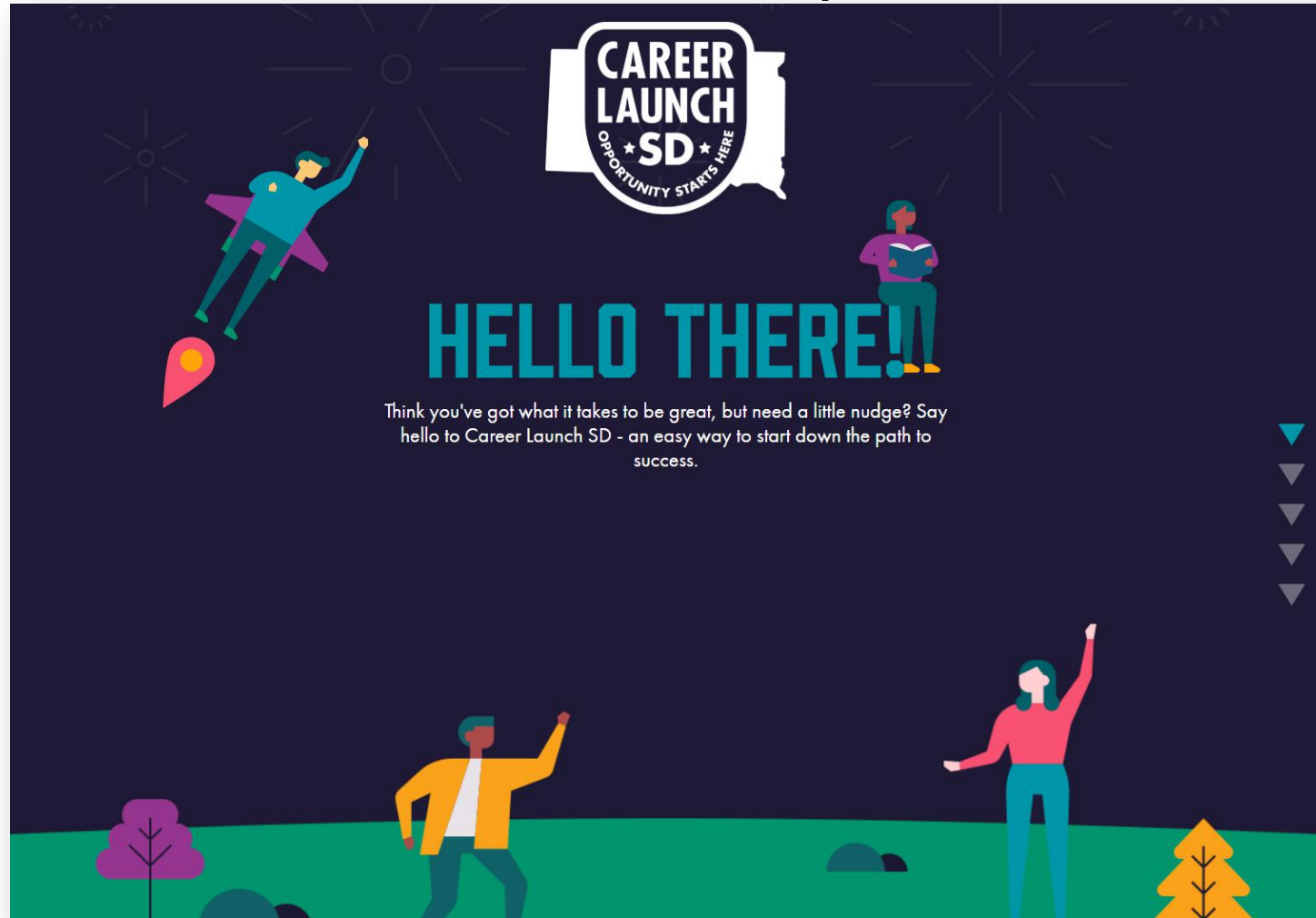
Career Launch SD was established under the leadership of former Governor Dennis Daugaard to increase student awareness about career opportunities in their communities and help meet South Dakota's demand for a skilled workforce. The Department of Labor and Regulation (DLR) encourages schools, businesses, parents and others in the workforce to join the effort to increase student awareness about careers so they can make informed decisions as they enter the workforce. To assist in this process, DLR has organized the following resources to assist with incorporating career information in the classroom.

A webinar on the Work-Based Learning Toolkit was presented Dec. 12, 2018. View the [Work-Based Learning Toolkit Overview Webinar](#) (MP4 video).

CAREER LAUNCH SD
OPPORTUNITY STARTS HERE

Career Launch SD / WIOA Youth Program

www.careerlaunchsd.com



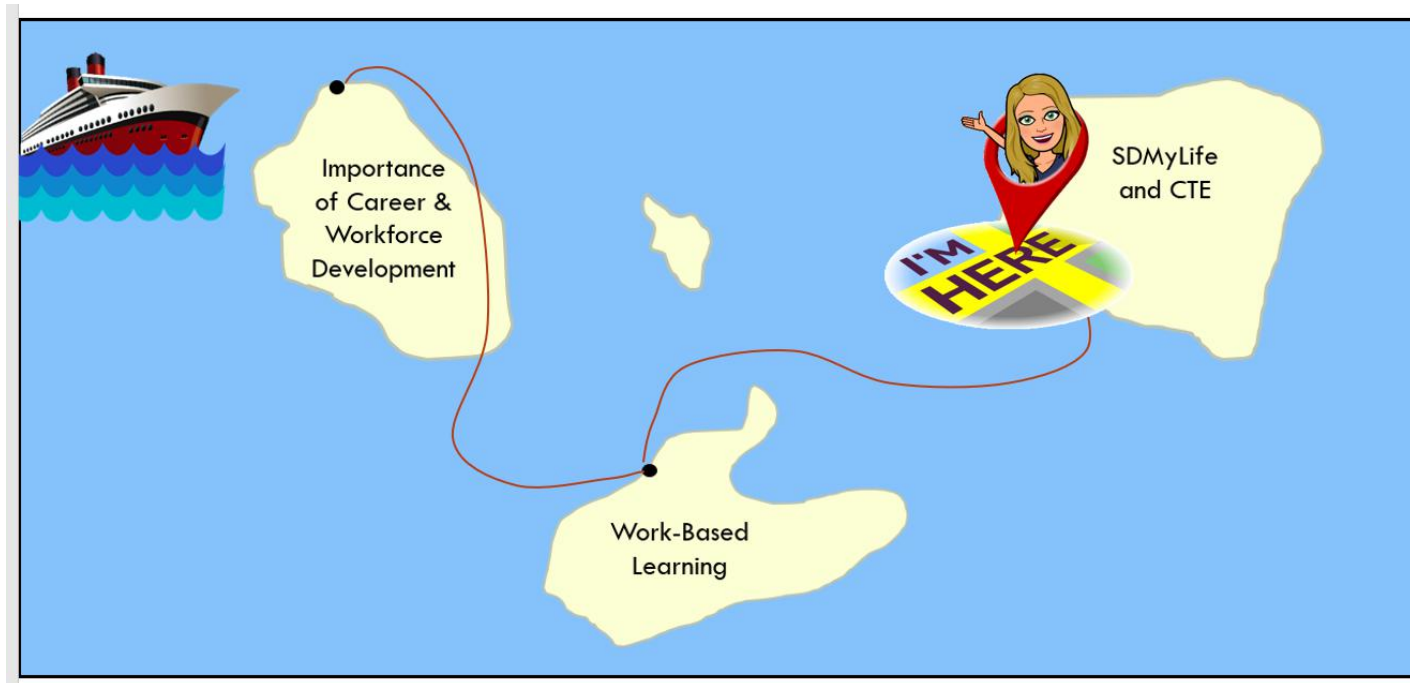
Career Launch SD/WIOA Youth Program



Verification



Career Launch SD/WIOA Youth Program



Identify desired vacation and develop an itinerary



Career Launch SD / WIOA Youth Program



- Vocational Rehabilitation
- Counselors/Teachers
- Natural Supports
- Job Corps
- Adult Education and Literacy
- Community Partners



Career Launch SD/WIOA Youth Program



Explore



Pierre Job Shadow Day

“This has been the best, most interesting day of school I’ve ever had.”



“I now know journalism is far more interesting than I initially thought. Without this program, I would have missed out big time.”



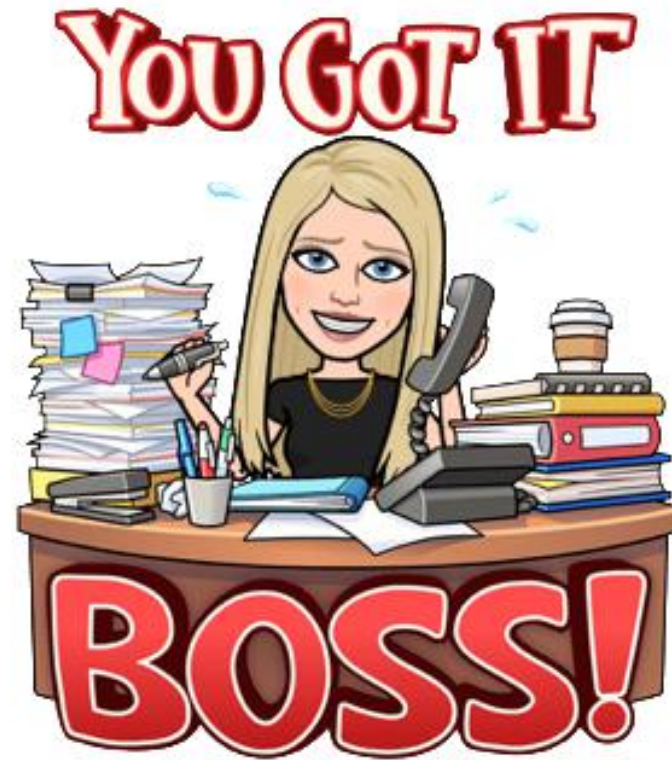
Career Launch SD/WIOA Youth Program



Learn

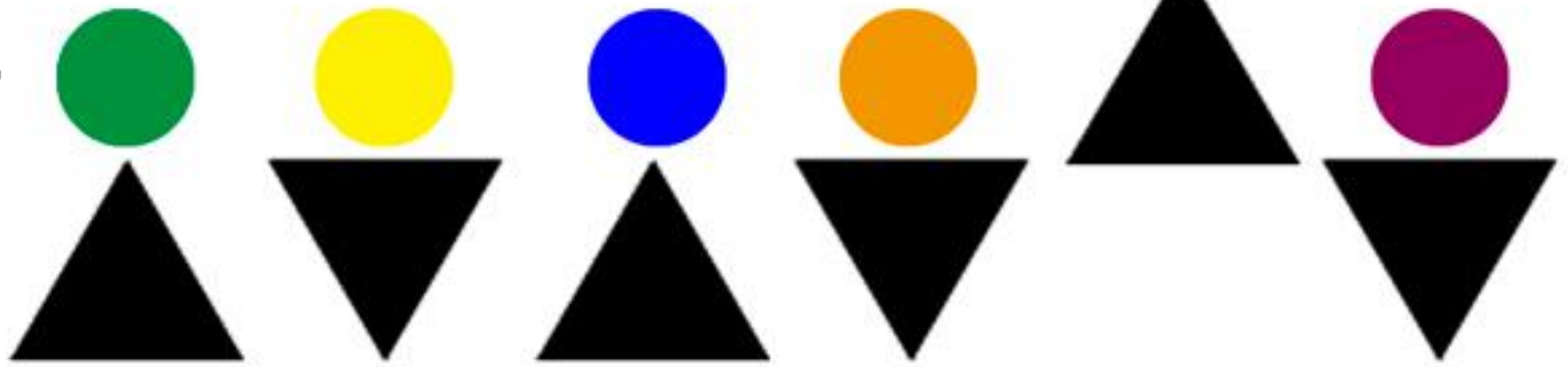


Career Launch SD/WIOA Youth Program





build UP





Importance
of Career &
Workforce
Development

Work-Based
Learning



SDMyLife
and CTE

SDMyLife and CTE can help students too?



South Dakota MyLife (www.sdmylife.com)

xello

About Me

Explore Options

Goals & Plans



HEY ANDREA!

ABOUT ME



Matchmaker

✔ Completed



Personality Style

✔ Completed



Mission Complete

✔ Completed



Learning Style

✔ Completed

EXPLORE OPTIONS



Careers



Schools



Majors



Saved Options

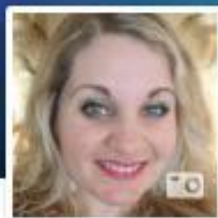
GOALS & PLANS



My Plans



Course Planner



ANDREA DIEHM

SD

South Dakota Xcello Demo School

Grade 9

Share your Profile

CAREER MATCHES

View all

School Counselor



\$32,660 - \$91,960

Motivational Speaker



\$5,000 - \$100,000

Personal Trainer



\$19,000 - \$70,000

Corporate Trainer



\$33,150 - \$102,340

Child and Youth Worker



\$20,000 - \$50,000

PERSONALITY STYLE



View Results

LEARNING STYLE



View Results

AFTER HIGH SCHOOL...

My goal More School or Training



Edit Goal

FAVORITE CLUSTERS

Which career clusters interest you?



Set Favorites

GO, ME!



SPECIAL EDUCATION TEACHER



\$38,710 - \$95,186



4-Year College



Increasing Demand

Fair Match
 Find out why

Save

Special education teachers teach students with special needs. This includes students with physical or learning disabilities.

JOB DESCRIPTION

Not everyone learns at the same speed or in the same way. Some students have learning disabilities. Others have hearing, visual, or speech disabilities. There are students with behavioral issues as well. These students all need extra attention to succeed in school. Special education teachers are trained to help these students learn. They give them the one-on-one help they can't get in a regular class.

Some teachers focus on helping students who have a certain kind of disability. For instance, some may teach students who are blind. But in most schools, they teach students with a wide range of special needs. These teachers create unique lesson plans for their students. They may also adapt other teachers' plans to meet their students' needs.

These teachers' tasks depend on the needs of their students. Take students who have learning disabilities, for example. For these students, teachers may use regular lessons but go at a slower pace. But for students who have ADHD, teachers may change up the work often or focus on enjoyable tasks.

Special education teachers often use technology to help their students. For example, students who are blind learn to use a Braille keyboard. Students who are deaf may use captioning software that allows them to read what is being said in a video. It's important to make sure all materials are accessible to all students.

Most of these teachers teach the subjects you find in any other classroom. These include science, math, and reading. Some also teach art and gym. Depending on the needs of their students, they may even teach everyday skills. This can include things like talking with others or balancing a checkbook.

SIMILAR CAREERS


Elementary School Tea...
 \$37,340 - \$92,770

High School Teacher
 \$39,080 - \$95,380

Recreation Therapist
 \$29,570 - \$74,210

Early Childhood Educator
 \$18,535 - \$42,052

Adult Education Teacher
 \$29,000 - \$100,000

CAREER CLUSTER

Education & Training
 Explore This Cluster


I need to provide and modify the curriculum and make accommodations to help my students succeed.

[Candice's full interview](#)


You have to be fair but firm, and consistent. Being respectful earns you respect from the students.

[Roosevelt's full interview](#)


INCREASING DEMAND

The demand for this career is increasing. Its growth rate is slower than the national average growth for all careers. But, many people are needed to work in this career compared with other careers.

CORE TASKS

- ✓ Adapt teaching methods to students' needs
- ✓ May use assistive technology, such as Braille keyboards, to teach students
- ✓ Teach academic subjects or life and social skills to students with special needs

WORKPLACE

- ⌚ 40 hours a week, for the 9 or 10-month school year
- 📁 Dealing with students with special needs can be emotionally demanding
- 🚗 May travel locally to visit students
- 📖 Work for public school boards, or work freelance in private homes or hospitals
- 🏠 Work indoors in classrooms and offices
- 👥 Work with special needs students, parents, therapists, and teachers

WELL SUITED TO THESE PERSONALITY STYLES

My Styles



Builder



Thinker



Creator



Helper



Persuader

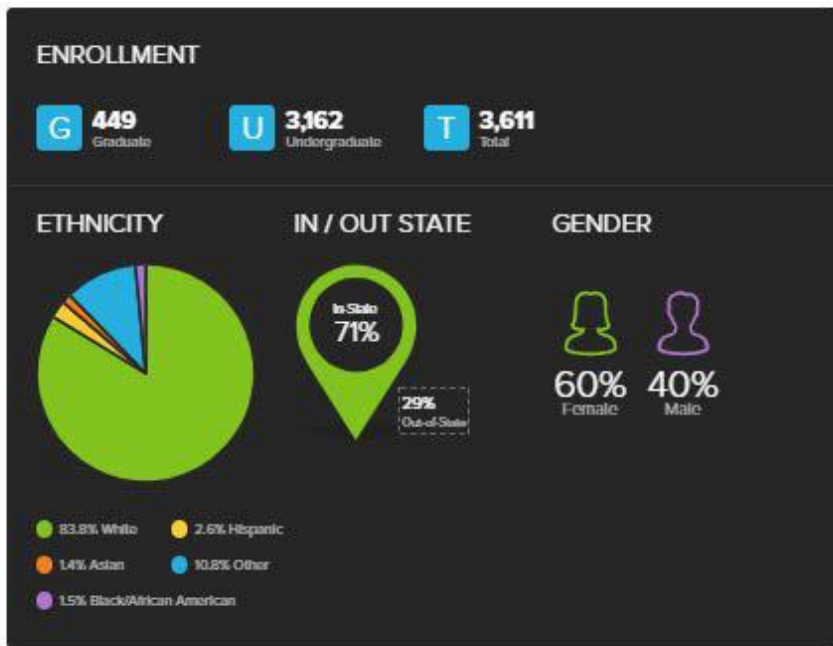
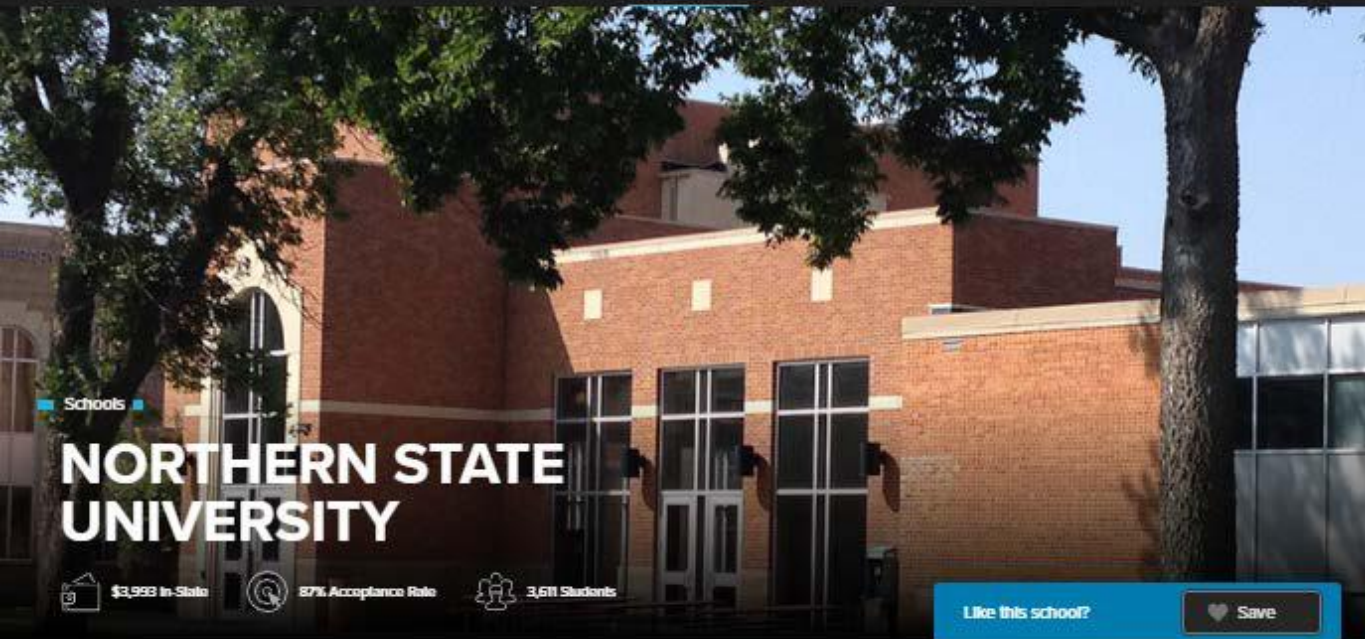


Organizer

WORKING CONDITIONS

Most special education teachers work for public schools. They work in elementary, middle, and high schools. Some have their own classrooms, where they work only with students with special needs. Others work in special resource centers in the school. Some may also work with other teachers in their classrooms.

Special education teachers can also work in:



[f](#)
[t](#)
[in](#)
[i](#)
[v](#)
[r](#)

LOCATION
1200 South Jay Street
Aberdeen, SD 57401-7198
[View Map](#)

CONTACT INFO
605-626-3011
<http://www.northern.edu/>

SIMILAR SCHOOLS

- [Augustana University](#)
- [Black Hills State University](#)
- [Dakota State University](#)
- [Lake Area Technical Institute](#)
- [University of Sioux Falls](#)
- [South Dakota State University](#)
- [University of South Dakota](#)

AVERAGE WEATHER [T](#) °C



www.sdmylife.com



[Prepping for College](#) |

[Prepping For Career](#) |

[Personal Learning Plan](#) |

[Educators](#) |

[About Us](#) |

[Contact Us](#)

[LOGIN](#)



Reality Check

After you finish school, you will need to work to pay for housing, food, clothes, transportation, and other items. Find out how much money you will need to earn to cover your expenses. Then find out which occupations will support this lifestyle through the Department of Labor and Regulation's Reality Check.

Prepping For Career

[Prepping For Career - Overview>](#)

[Career Clusters>](#)

[Cluster Camps>](#)

[Student Organizations>](#)

[Pre-Career Testing>](#)

[Rigorous Coursework>](#)

[Career Resources>](#)

Reality Check

After you finish school, you will need to work to pay for housing, food, clothes, transportation, and other items. Find out how much money you will need to earn to cover your expenses. Then find out which occupations will support this lifestyle.

Get a Reality Check

Don't know how much money you will need to earn in the future? Don't know which occupation to choose? No problem.

[Get a Reality Check](#)

Future Salary

Already know how much money you want to earn? Great. Enter the amount to get information on which occupations pay that much or more.

Example: 45000 [Future Salary](#)

Occupation Direct

Already know which occupation you want to pursue? Click here to find out how much you can buy with the salary you will earn in your chosen occupation.

[Occupation Direct](#)



Career & Technical Education (CTE)

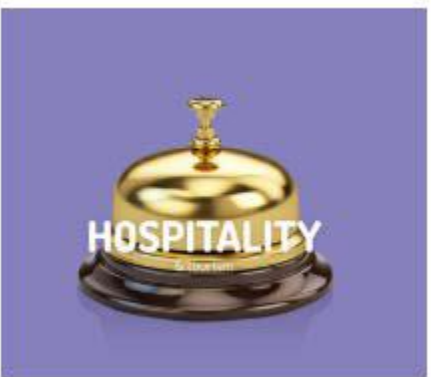


&



THE
REAL
WORLD





16 Career Clusters



16 Career Clusters

Students in Special Education in CTE (2017-18)

FACT!

3,553 participants



HUMAN
services

1,547



AGRICULTURE
food and natural resources

874



ARTS
audio/video technology & communications

805

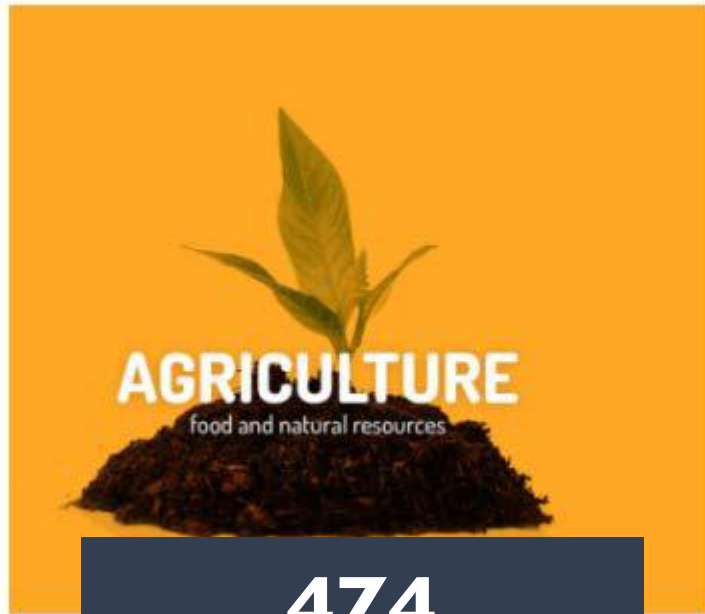


Students in Special Education in CTE (2017-18)

FACT!

1,244 concentrators

(2+ CTE courses throughout high school)



474



316



231



Vocational Education (Vo-Tech)

vs.

What's in a Name?



Why the Change?

Career & Technical Education (CTE)

Vo-Tech focused on...		CTE focuses on...
Students who performed poorly in academic courses and/or were not considered 'college material'	STUDENTS	ALL students, regardless of performance or postsecondary and career plans
A small number of low-wage careers	CAREERS	ALL careers, including high-demand fields such as health science, information technology, and advanced manufacturing
High school and traditional two-year postsecondary institutions only	SCHOOL LEVEL	Middle school through postsecondary, including technical institutes and universities
Static skills only, in place of academic preparation	STANDARDS & ACADEMICS	The integration of academics and career preparation within a rigorous standards-based curriculum
Short-term training and either training at a two-year postsecondary institution or no college	TRAINING	Professional certifications, associate degrees, four-year degrees and beyond

Vo-Tech

**NARROW FOCUS,
SMALL IMPACT**

vs.

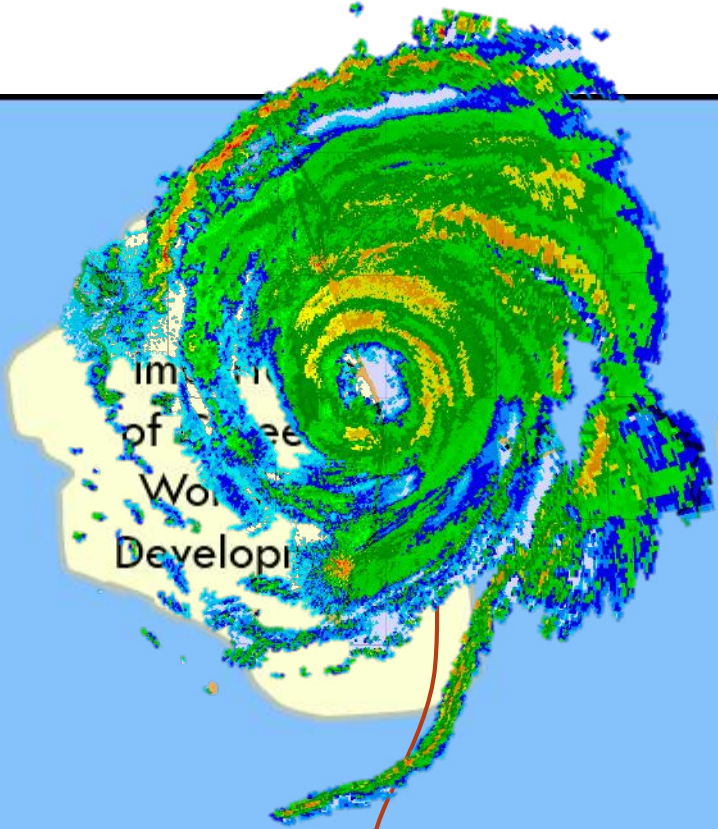
CTE

**BROAD FOCUS,
LARGE IMPACT**

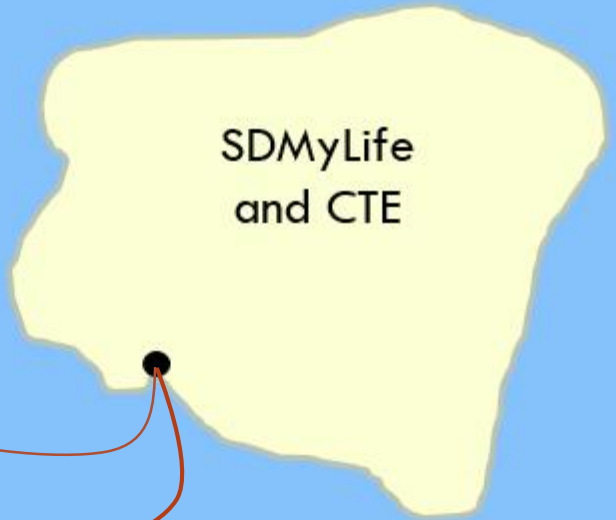


**CTE 4
ALL
4 CTE**





Importance
of Career
Work
Developi



SDMyLife
and CTE



Work-Based
Learning





PUTTING CAREER EXPLORATION AND PREPARATION TOGETHER

Name: _____

Date: ____/____/____

SDMyLife Career Matchmaker Results for Your Personality Style:

_____ Builder (Realistic)

_____ Thinker (Investigative)

_____ Creator (Artistic)

_____ Helper (Social)

_____ Persuader (Enterprising)

_____ Organizer (Conventional)

SECTION 1: Information from SDMyLife (www.sdmylife.com) on Career Choices 1, 2 and 3

	CAREER CHOICE #1: _____	CAREER CHOICE #2: _____	CAREER CHOICE #3: _____
Job Description			
Working Conditions			
Entry-Level Salary (South Dakota, if listed on the web page)			
Experienced-Level Salary (South Dakota, if listed on the web page)			
Education & Training Needed			
Related Majors			
Why I like it...			
Concerns			

SECTION 2: National Career Readiness Certificate (NCRC) & South Dakota-Specific Information on Career Choices 1, 2 and 3

	CAREER CHOICE #1:	CAREER CHOICE #2:	CAREER CHOICE #3:
NCRC & ACT WorkKeys Career Page (http://profiles.keytrain.com/profile_search/)			
My NCRC Certificate Level <i>(circle one)</i>	Applied Math <i>(circle one)</i>	Workplace Documents <i>(circle one)</i>	Graphic Literacy <i>(circle one)</i>
Platinum	Platinum (6 or 7)	Platinum (6 or 7)	Platinum (6 or 7)
Gold	Gold (5)	Gold (5)	Gold (5)
Silver	Silver (4)	Silver (4)	Silver (4)
Bronze	Bronze (3)	Bronze (3)	Bronze (3)
No certificate			
Median Skill Level	Applied Math: Workplace Documents: Graphic Literacy:	Applied Math: Workplace Documents: Graphic Literacy:	Applied Math: Workplace Documents: Graphic Literacy:
Wages & Employment Trends and Job Openings sections on www.onetonline.org and LMIC Hot Careers (https://dlr.sd.gov/lmic/menu_hot_careers.aspx)			
South Dakota Projected Annual Openings			
South Dakota Current Job Openings			
SD Hot Career <i>(yes or no)</i>			

SECTION 3: Work-Based Learning Experiences on Career Choices 1, 2 and 3

	CAREER CHOICE #1:	CAREER CHOICE #2:	CAREER CHOICE #3:
My Work-Based Learning Experiences <i>(examples: informational interview, job shadow, internship, apprenticeship, etc.)</i>			



Importance
of Career &
Workforce
Development



SDMyLife
and CTE

Work-Based
Learning



BON VOYAGE!

Andrea Diehm

Andrea.Diehm@state.sd.us



Kendra Ringstmeyer

Kendra.Ringstmeyer@state.sd.us

