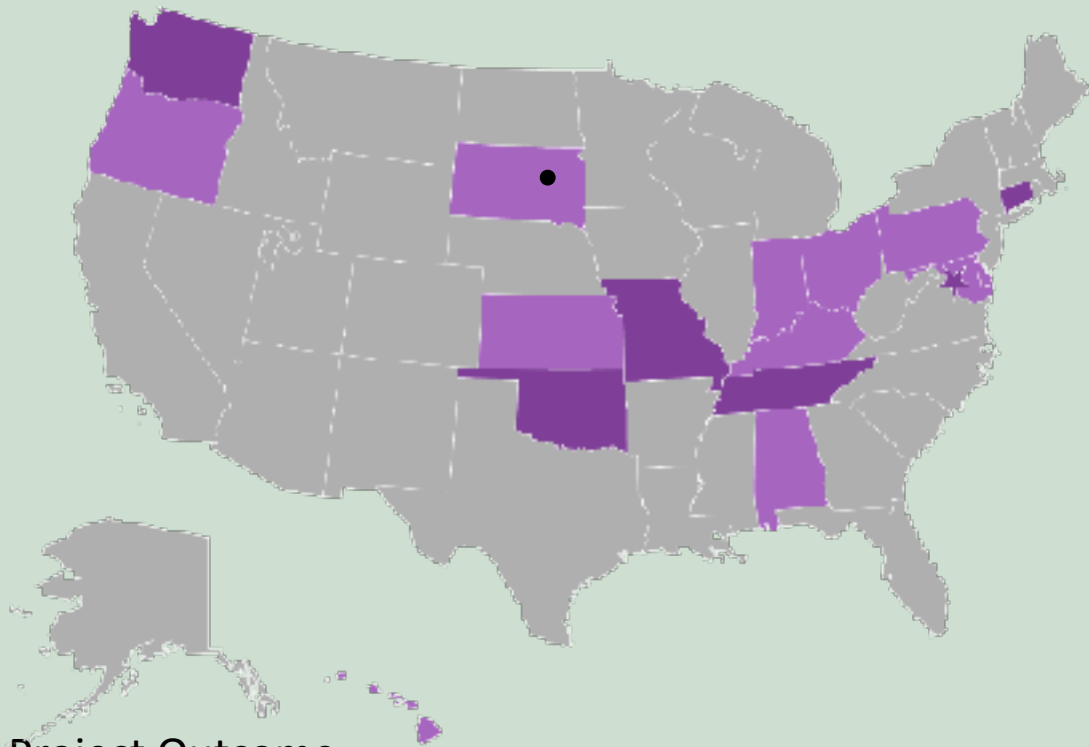




Supporting a Vision for a Good Life

Division of Developmental Disabilities

Dona Deal & Brooke Nelson



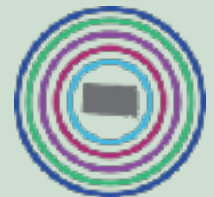
National Community of Practice for Supporting Families

Project Goal

To build capacity through a community of practice across and within States to create policies, practices and systems to better assist and support families that include a member with I/DD across the lifespan.

Project Outcome

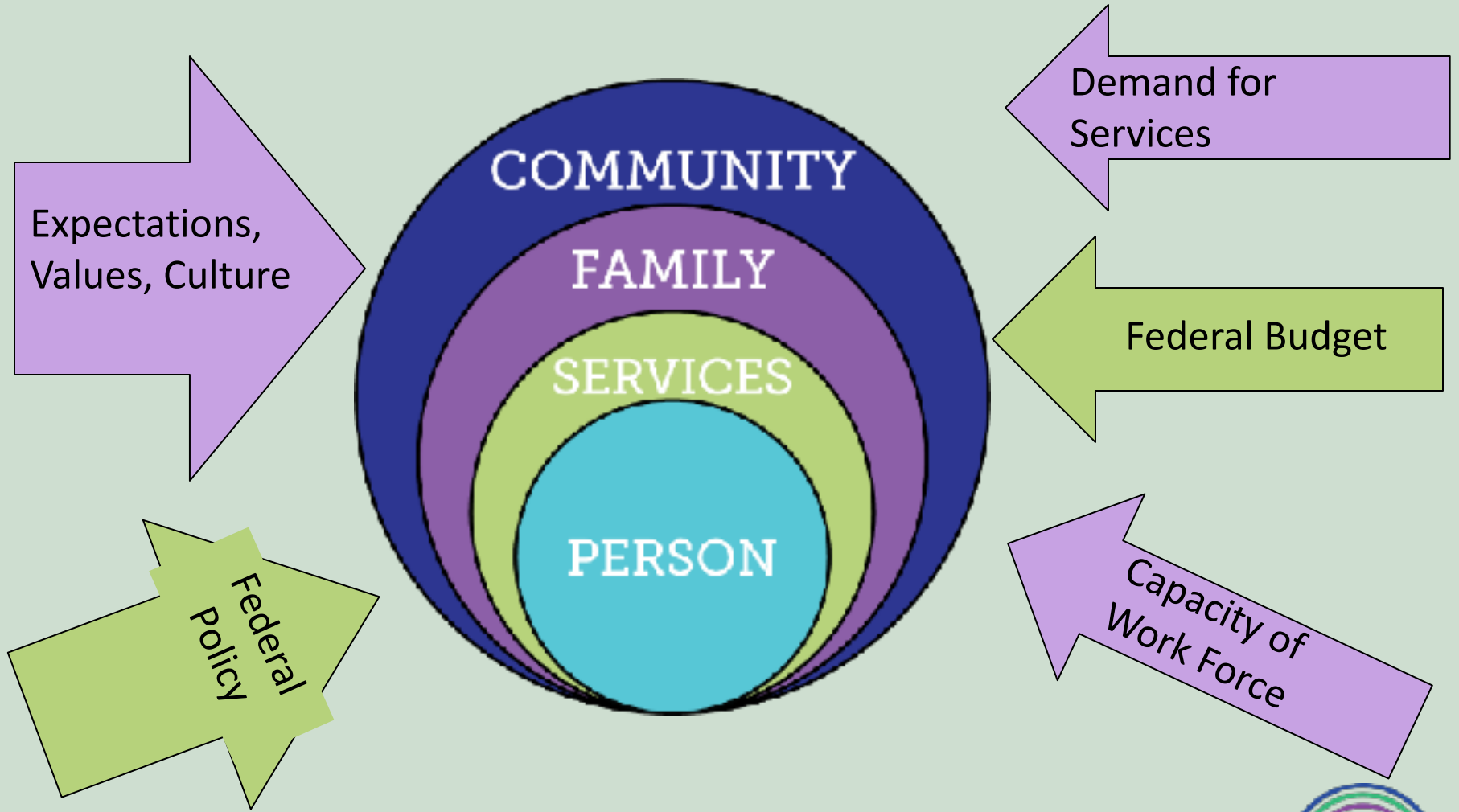
- State and national consensus on a national framework and agenda for improving support for families with members with I/DD.
- Enhanced national and state policies, practices, and sustainable systems that result in improved supports to families.
- Enhanced capacity of states to replicate and sustain exemplary practices to support families and systems.



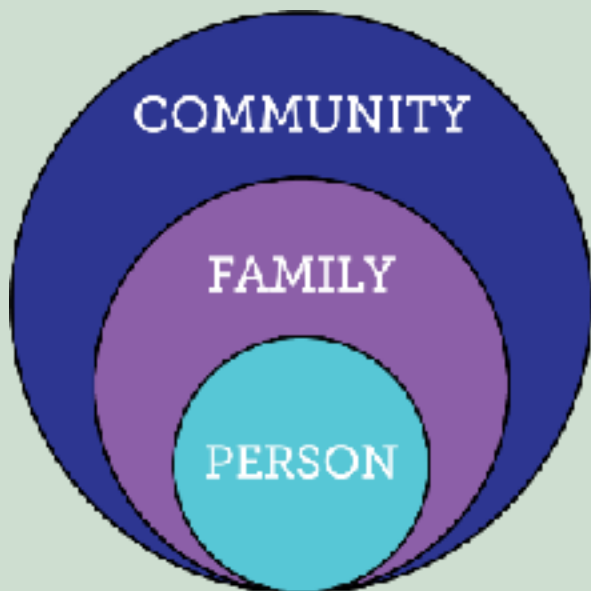


Core Belief:
All people and their families
have the right to live, love,
work, play
and pursue their life
aspirations in their
community.

Current Reality of Services and Supports



Services and Supports are Evolving



Everyone exists within the context of family and community

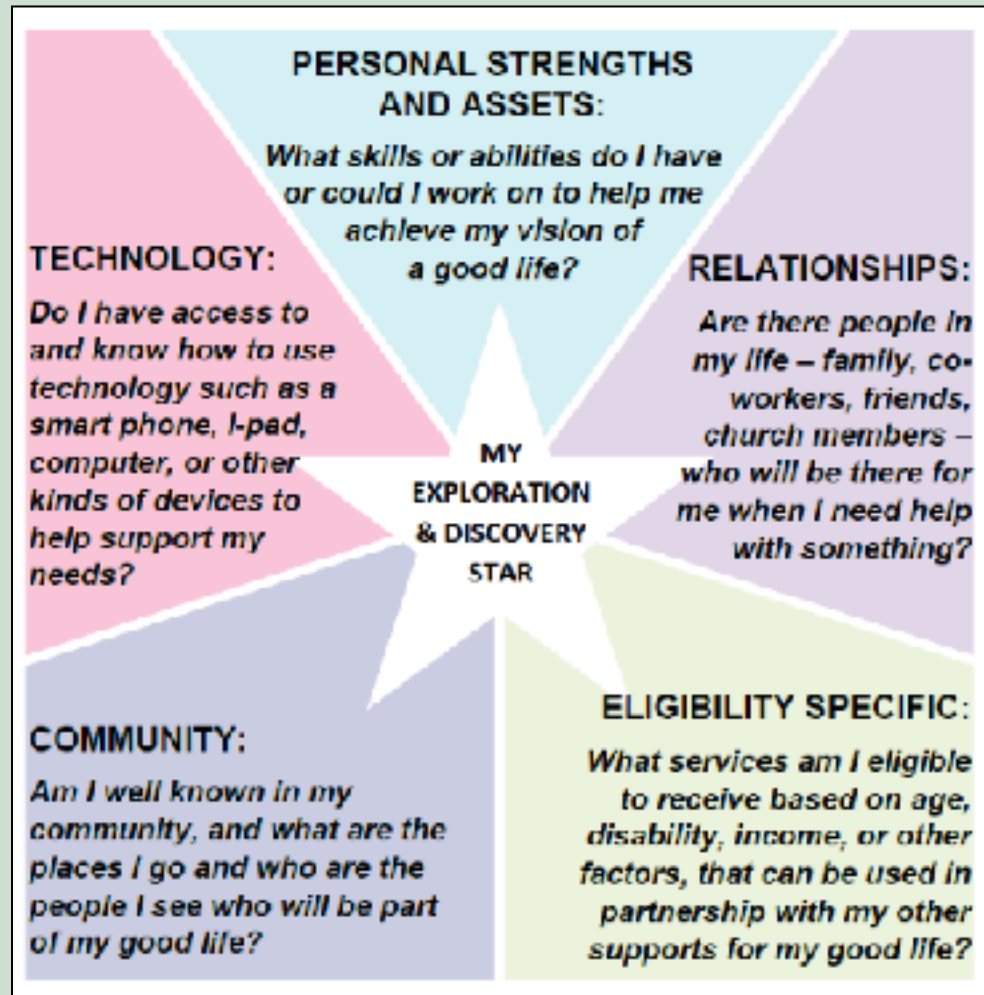


Traditional Disability Services



Integrated Services and Supports within context of person, family and community

LifeCourse Integrated STAR: Exploration & Discovery (Mapping)





DDD Mission Statement

To ensure that people with developmental disabilities have equal opportunities and receive the services and supports they need to live and work in South Dakota communities.



Collaboration...



Intervention & Support Specialists take referrals from a variety of sources and maintain working relationships with;

Community Support Providers.....Vocational Rehabilitation.....School Districts....Teachers...Family members....Long Term Services and Supports.....Centers for Independent Living.....Transition Services Liaison Project.....Family Support Coordinators.....Disability Rights (list not all inclusive)

- ❖ partner with other agencies to provide supports to meet needs of the person
- ❖ works cooperatively with schools during time of student transition (ages 16-21)
- ❖ connect person to resources that could assist and support them in their home community

Western Area – Rapid City Office

2330 N. Maple Ave
Suite 2
Rapid City, SD 57701

Dona Deal
**Intervention and Support Specialist/
Specialist/
Program Specialist I**



Phone: 605-394-2302
Toll Free: 888-895-4502
Fax: 605-394-1659
Email: Dona.Deal@state.sd.us

Community Support Providers

Black Hills Special Services Cooperative, Sturgis, SD
Northern Hills Training Center, Spearfish, SD
Black Hills Works, Rapid City, SD
LIVE, Lemmon, SD

Central Area – Pierre Office

Hillsview Properties Plaza
East Highway 34, c/o 500 East Capitol
Pierre, SD 57501-5070

Kari DeGreef
**Intervention and Support Specialist/
Specialist/
Program Specialist I**



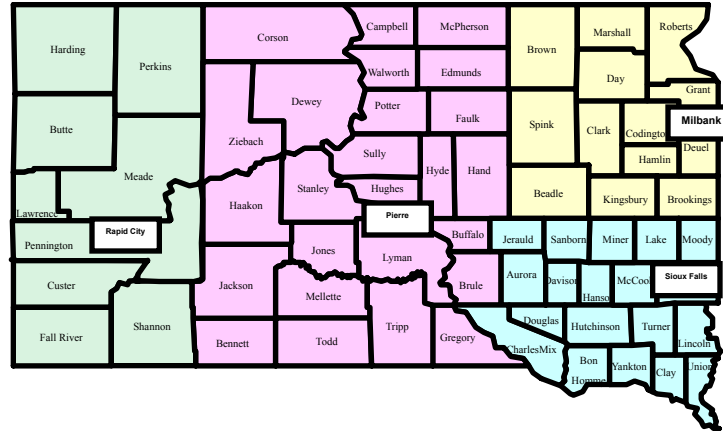
Phone: 605-773-3438
Toll Free: 800-265-9684
Fax: 605-773-7562
Email: Kari.DeGreef@state.sd.us

Community Support Providers

OAHE, Pierre, SD
Dakota Milestones, Chamberlain, SD
Community Connections, Winner, SD



Division of Developmental Disabilities
Statewide Intervention and Support



 Western Area

 Northeast Area

 Central Area

 Southeast Area

Northeast Area – Brookings Office

601 4th Street
Suite 112
Brookings, SD 57006

Brooke Nelson
**Intervention and Support Specialist/
Program Specialist I**

Phone: 605-688-5103
Toll Free: 877-647-0024
Fax: 605-688-5104
Email: Brooke.Nelson@state.sd.us

Community Support Providers

ASPIRE, Aberdeen, SD
ADVANCE, Brookings, SD
New Horizons, Watertown, SD
Center for Independence, Huron, SD

Southeast Area - Sioux Falls Office

811 E. 10th Street,
Dept 23
Sioux Falls, SD 57103-1650

Carrie Geppert
**Intervention and Support Specialist/
Program Specialist I**



Phone: 605-362-4857
Toll Free: 888-510-9388
Fax: 605-367-5327
Email: Carrie.Geppert@state.sd.us

Community Support Providers

LifeScape, Sioux Falls, SD
VOA-Dakotas, Sioux Falls, SD
DakotAbilities, Sioux Falls, SD
SE Directions for Life, Sioux Falls, SD
SESDAC, Vermillion, SD
Ability Building Services, Yankton, SD
Valiant, Madison, SD
LifeQuest, Mitchell, SD
RHD, Sioux Falls, SD

People supported by DDD

- Intellectual Disability
- Developmental Disability
 - Autism
 - Cerebral Palsy
 - Traumatic Brain Injury
 - FASD
 - Seizure Disorder

Limitations due to mental or physical issues

Likely present throughout lifespan

Occurs before a person is 22 years old

DDD Medicaid Waiver Services

- The Centers for Medicare and Medicaid Service's (CMS) authorization to provide home and community based services (HCBS) is called a Medicaid "Waiver"
- The DDD operates two Medicaid Waiver programs, called CHOICES and Family Support, serving South Dakotans with intellectual and developmental disabilities to live and work in their community

HCBS Eligibility Requirements



- Resident of SD
- Eligible for Medicaid
- Documented diagnosis of intellectual or developmental disability



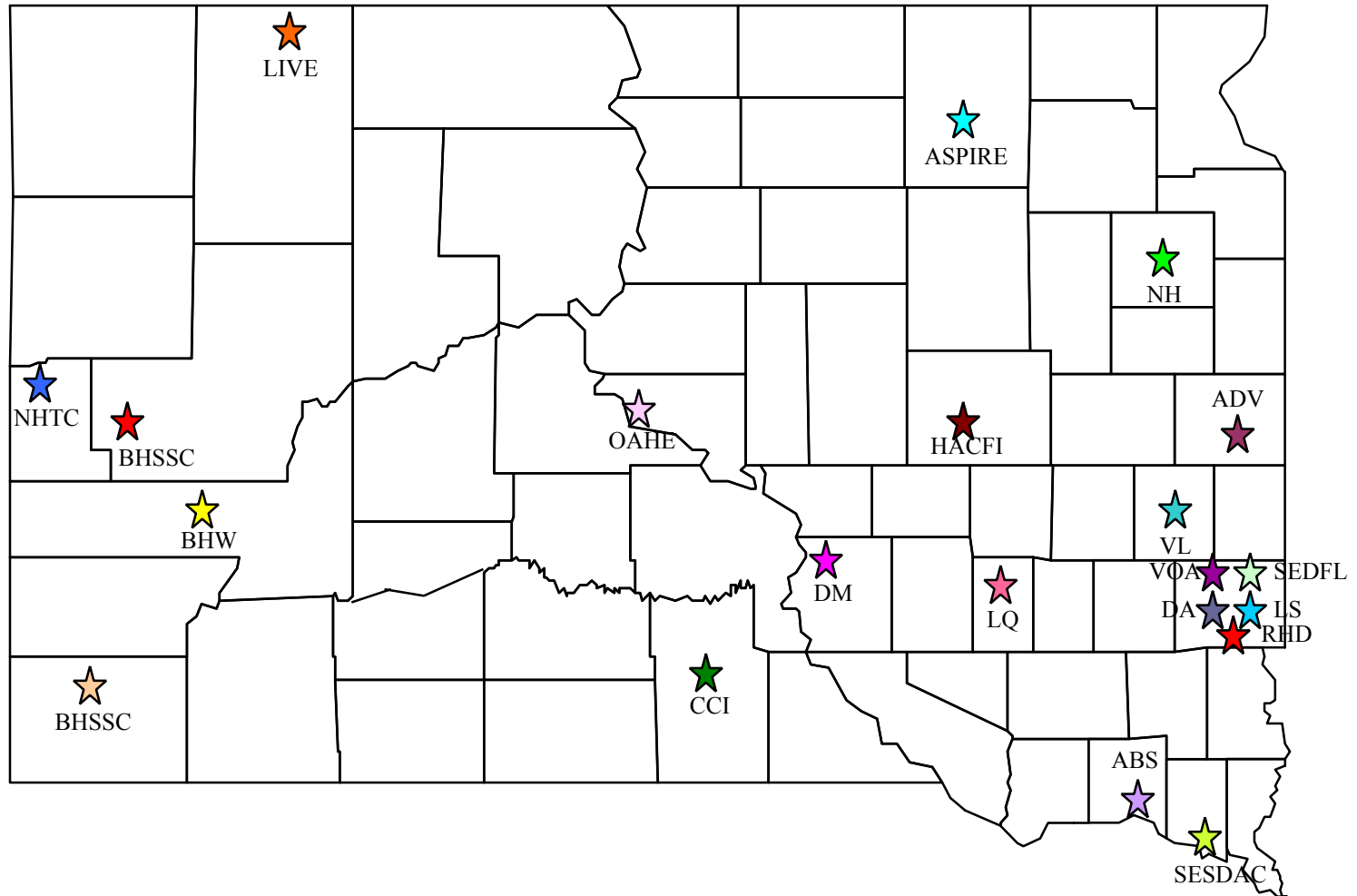
Choices Waiver Program

Community
Hope
Opportunity
Independence
Careers
Empowerment
Success



- CHOICES Services
 - Case Management
 - Residential Supports and Shared Living
 - Day Habilitation
 - Career Exploration
 - Supported Employment
 - Nursing
 - Specialized Medical Services, Equipment and Drugs
- Services are delivered by 4 Case Management Providers and 20 Community Support Providers

COMMUNITY SUPPORT PROVIDERS



Community Support Providers

Ability Building Services, Yankton

ASPIRE, Aberdeen

ADVANCE, Brookings

Black Hills Special Services Cooperative, Sturgis

Black Hills Workshop and Training Center, Rapid City

Center for Independence, Huron

Community Connections, Inc., Winner

DakotAbilities, Sioux Falls

Dakota Milestones, Chamberlain

Valiant Living, Madison

LifeQuest, Mitchell

LIVE Center, Lemmon

New Horizons, Watertown

Northern Hills Training Center, Spearfish

Oahe, Inc., Pierre

Lifescape, Sioux Falls

Southeast Directions for Life, Sioux Falls

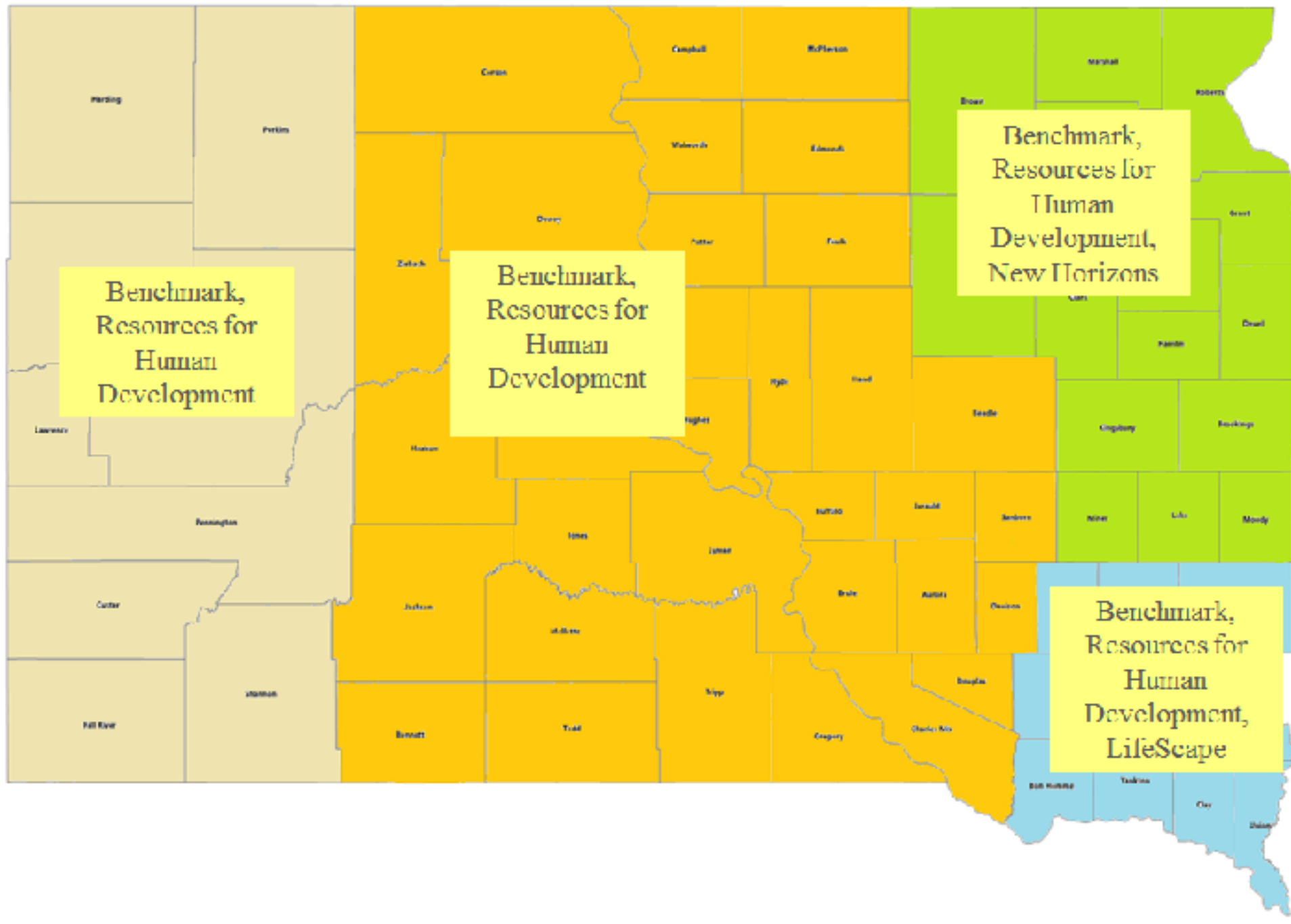
SESDAC, Vermillion

Volunteers of America, Sioux Falls

RHD, Inc., Sioux Falls



Case Management Regional Map



A Case Management provider must be selected to initiate the start of services at the provider agencies.

How to contact a CM Provider

Benchmark

Tacey Dunwoody, State Director
605.644.7370
tdunwoody@BenchmarkHS.com.

New Horizons

Naomi Evens, CFCM Admissions
605.884.3506
Naomie@Humanserviceagency.org

Resources for Human Development (RHD)

KD Munson, State Director
605.222.1245
KD.Munson@RHD.org

LifeScape

Amy Hoekstra, Manager of Case Management
& Program Coordination
605.444 9869
605.359.6209
Amy.hoesktra@lifescapesd.org

How this works

- CM meets with the applicant, gets to know them, and what is important to and what is important for them. The CM will assist in identifying what services are needed, when services will start, and which CSPs will receive the application packet.
- CM and applicant may tour CSPs and discuss potential services and availability
- CM assists the applicant with the application packet requirements
- CSP admissions committee reviews application packet and determines ability to provide the supports requested by the applicant.
- CSP Admissions notifies the CM of the decision. Additional information may be requested if necessary to make the decision.
- CM submits the required documentation to Pierre to request the funding

Transition Planning

- Select a CM provider
- Invite CM provider to future IEPs and keep informed of IEP documents and transition progress
- Prior to age out - CM will be assigned and begin facilitation of approval and initiating service start date
- CSPs can be invited to the IEPs to inform teams of service provisions
- A CSP can be selected anytime in the transition process

Family Support Program

- Family Support Services
 - Service Coordination
 - Respite Care
 - Companion and Personal Care
 - Supported Employment
 - Environmental Accessibility
 - Vehicle Modification
 - Specialized Medical and Adaptive Equipment and Supplies
 - Nutritional Supplements



The Family Support Program is self-directed and allows for the individual and family to guide the direction of the services based on their needs throughout the lifespan.

Family Support 360



- Can be a Lifelong service
- Self-Directed Services enables families to choose who provides the direct service
- Complementary to school IEP

What you can do

Prior to the team meeting, ask the person and their family if they are receiving Family Support 360 services.

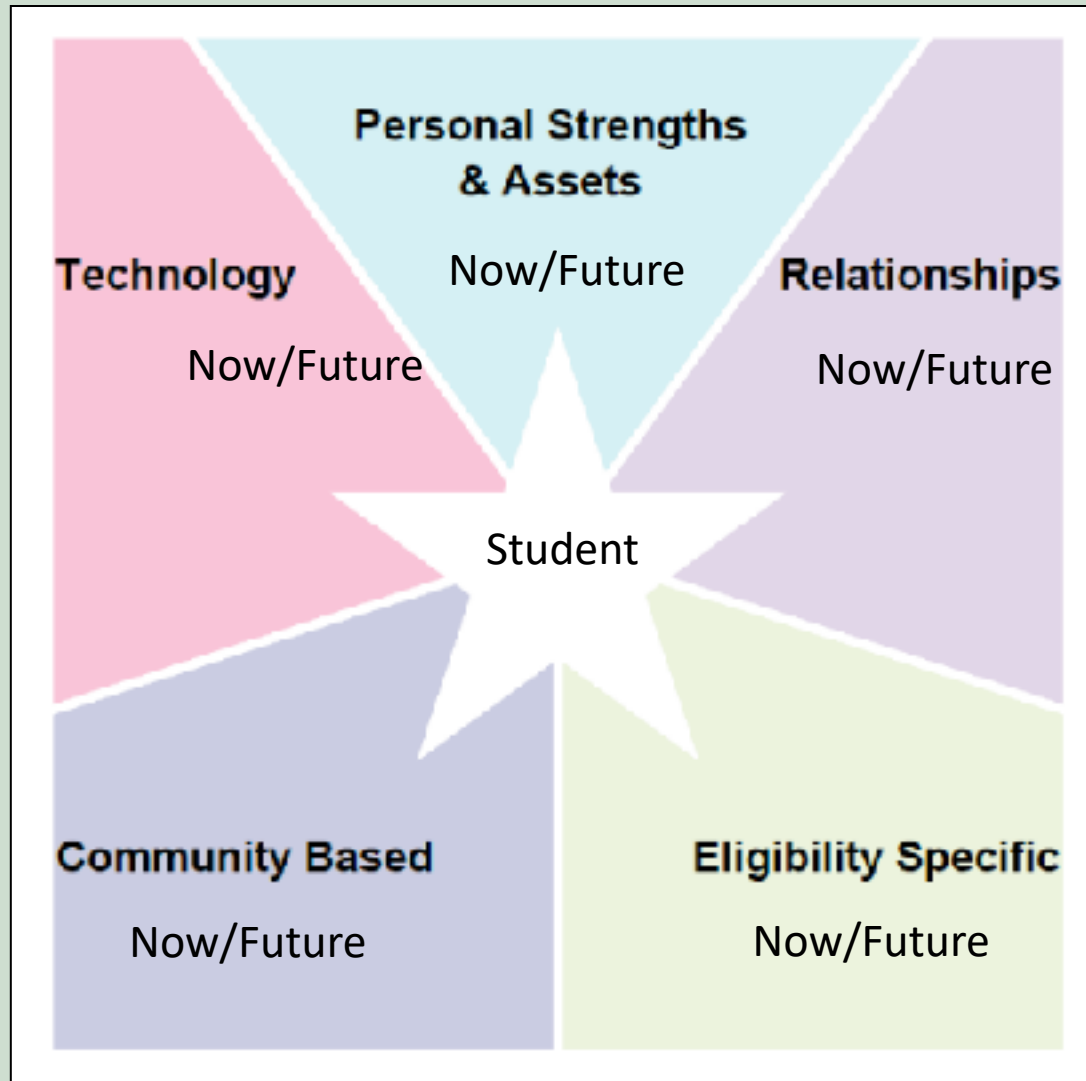
- If they are, request consent to invite the FS Coordinator to the IEP
- If they are not, provide information/referral

Family Support Program Providers

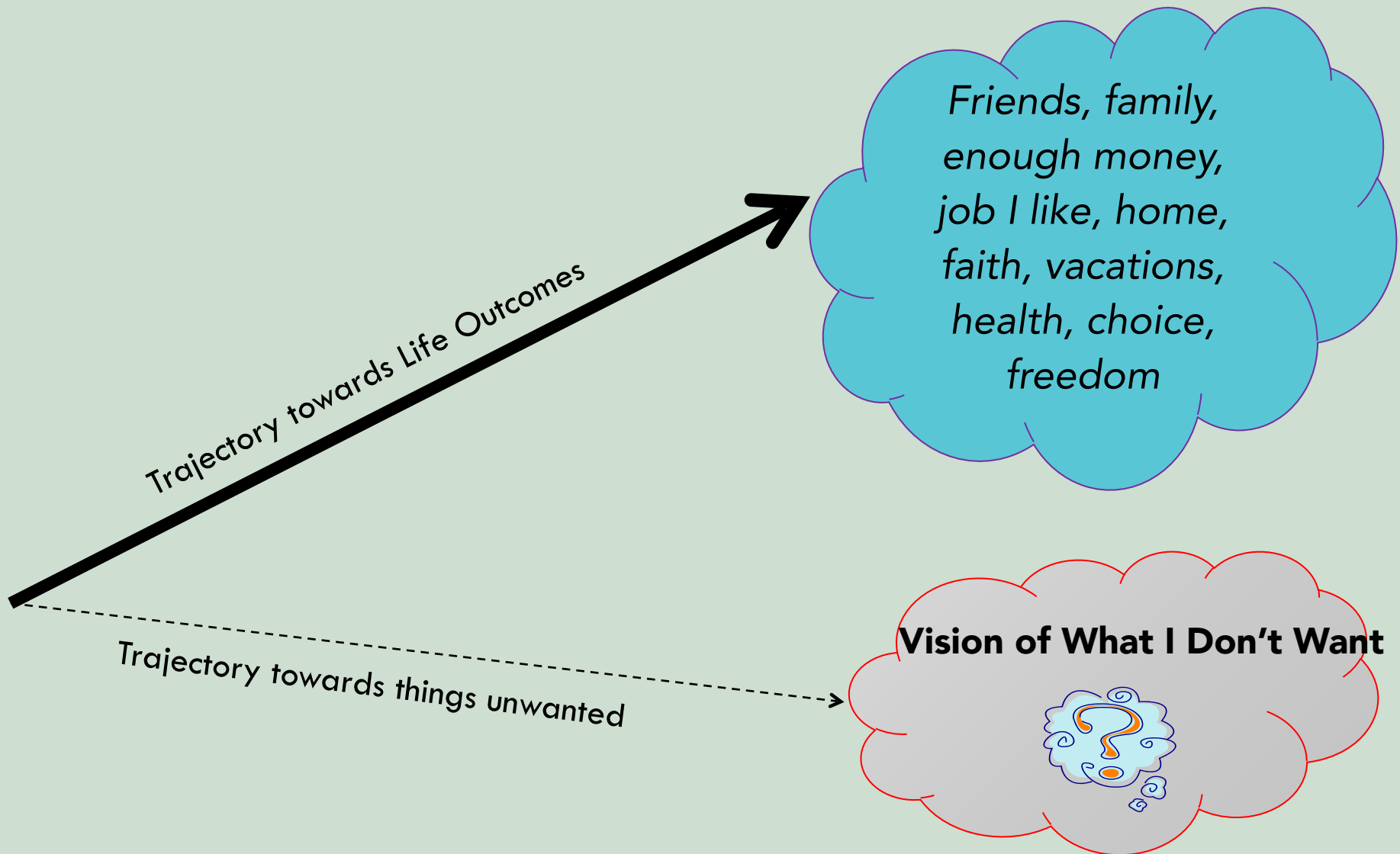
Providers	City	Area	Phone
Benchmark	Spearfish	Statewide	605.644.7370
Black Hills Special Services Cooperative	Sturgis	Western & Central	605.347.4467
Dakota Milestones	Chamberlain	Central & Southeast	605.734.5542
Huron Area Center for Independence	Huron	Northeast	605.352.5698
LifeQuest	Mitchell	Southeast	605.996.2032
LifeScape	Sioux Falls	Southeast	605.444.9500
SESDAC, Inc	Vermillion	Southeast & Northeast	605.624.4419
Volunteers of America	Sioux Falls	Southeast	605.334.1414

Other DDD Programs

- Community Training Services (CTS)
 - Career exploration, community living training and follow-along services for people needing less intensive services or who do not meet the eligibility criteria for HCBS
- Strengthening Families Program
 - A wide array of supports provided to meet the needs of families who have a child or an adult with a developmental disability. This program utilizes limited funding for the purchase of goods and services.
- Respite Care Program
 - Temporary relief for families caring for children or adults in their home



Trajectory towards Good Life



Questions?

Thank you!

Contact Information

Dona Deal

Rapid City, SD

Dona.deal@state.sd.us

(605) 394 2302

Brooke Nelson

Brookings, SD

Brooke.nelson@state.sd.us

(605) 688 5103